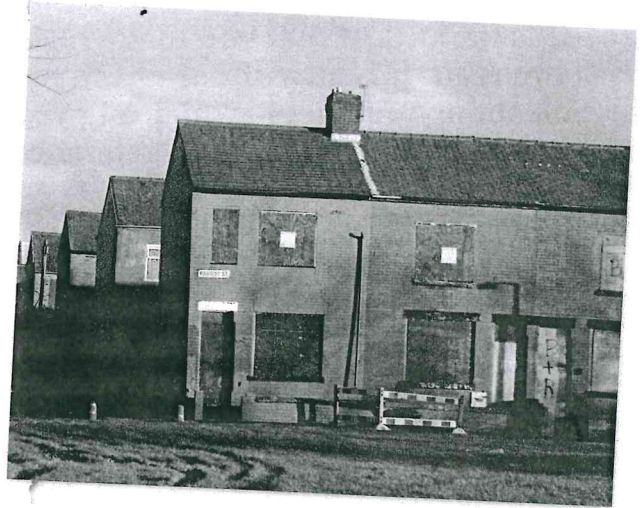


Context

In this next extract, the girls are on their way to the new school.

Then the marching columns came to a miserable little hump-backed bridge over a solitary railway-line, empty and rusting. Beyond were the same kind of houses; but afflicted by some dreadful disease, of which the symptoms were a rash of small window-panes, flaking paint, overgrown funereal privet-hedges and sagging gates that would never shut again. And then it seemed to grow colder still, as the slum-clearances started, a great empty plain of broken brick, and the wind hit them full, sandpapering facts and sending grey berets cartwheeling into the wilderness.



Think about the way that imagery is used here – in particular, by **personification** – to create a strong mood or atmosphere.

- 1 What kind of mood is created by the following images?
 - 'a miserable little hump-backed bridge'
 - 'a solitary railway-line'
 - 'houses ... afflicted by some dreadful disease'
- 2 How does the description of the weather add to the mood?

Glossary

personification: giving a non-human object or thing human characteristics